

# Nestable Meat Crate



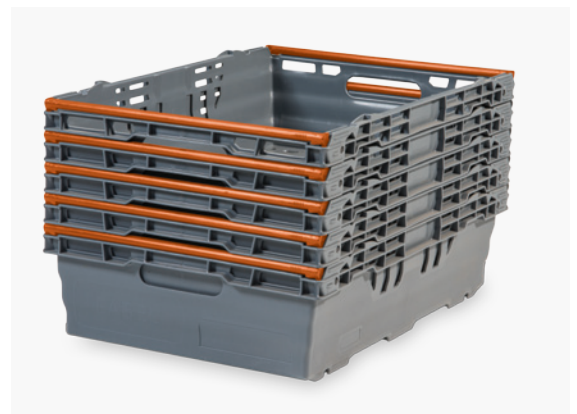
PN6416A



- **Nestable** - reduces freight costs
- Maintains freshness of goods
- Hygienic and clean
- Easy and safe to handle
- Environment friendly - 100% recyclable
- Long-life, reusable, multipurpose
- Durable - resistant to water

Euro-size, nestable, heavy duty, especially designed for transporting meat and agricultural products

- Strong, durable for heavy loads
- Smooth finish minimizes damage to contents
- Ergonomic handholds on both sides
- Can be branded with logo
- Available in colored virgin material
- Food-grade certification



## Specifications

DIMENSIONS		
External dimensions (L / W / H)	600 / 400 / 160 mm	23.62 / 15.74 / 6.3 in
Internal dimensions (L / W / H)	548 / 348 / 148 mm	21.57 / 13.7 / 5.82 in
Usable internal height	142 mm	5.59 in
LOGISTICS		
Weight	1.5 KG	3.3 LB
Usable volume	28 L	7.39 GAL
Maximum load capacity	16 KG	35.2 LB
Maximum load capacity in stack	200 KG	440.9 LB
Max. units per Euro pallet	40	
Max. units per ISO pallet	50	
Units per 20 / 40 / 40HC	2,350 / 4,935 / 5,670	
MATERIAL		
Material	PP	
Color	GREY RAL 7046	

## Additional information

Temperature	Service: 0°-60°C   32°-140°F	Washing: 80°C   176°F
Properties	UV radiation resistant, guaranteed long life color intensity, food safe	

## Notes on use

