

## Features

---

- 100% recyclable
- Protects products
- Light weight
- Decreases transportation & disposal costs (cost effective)
- Reduces injuries
- Easy to handle

## Design

---

- Prevents the adherence to ice
- Solid body, one-piece construction
- Anti-slip surface
- 4 way forklift and pallet jack entry (US and EU)
- Reinforced, perforated deck
- Resistant to most chemicals
- Meets GMA standards

## Options

---

- Custom colors (virgin only)
- Molded-in logo or custom identification
- Bar coding
- Rubber anti-slip
- Skids

# Specifications

## DIMENSIONS

Dimensions (L / W / H) 1200 / 1000 / 152 mm 47.2 / 39.4 / 6 in

## LOGISTICS

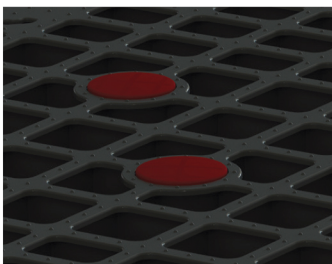
	No Skids		3 Skids		5 Skids		6 Skids	
Weight	8 KG	17,6 LB	11,7 KG	25,8 LB	12,7 KG	28 LB	13,2 KG	29 LB
Maximum load Dynamic	1,400 KG	3,087 LB	1,400 KG	3,087 LB	1,400 KG	3,087 LB	1,400 KG	3,087 LB
Maximum load Static	3,000 KG	6,614 LB	3,000 KG	6,614 LB	3,000 KG	6,614 LB	3,000 KG	6,614 LB
Racking			500 KG	1102.3 LB	500 KG	1102.3 LB	500 KG	1102.3 LB
Units per 53' Truck	1,620		1,410		1,200		1,200	
Pallets per Stack	54							

## ADDITIONAL INFORMATION

Material	PP/HDPE recycled or virgin	
Temperature	-18°C to +78°C	0°F to +172°F
Ignition point Temperature	>350°C	

\* Load Capacities are based on evenly distributed loads and can vary according to the type of load.

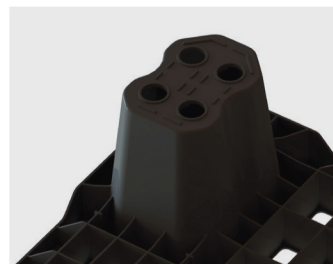
## More details



Dots and rubber (optional) anti-slip



Easy forklift entry when nested



Strong legged structure



Skids (optional)

## Technical Drawing

