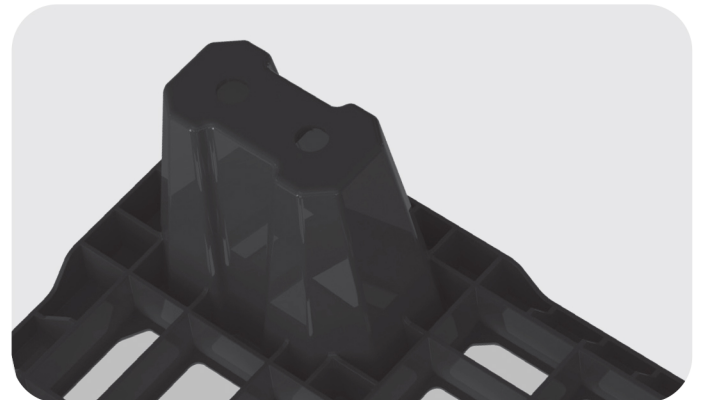
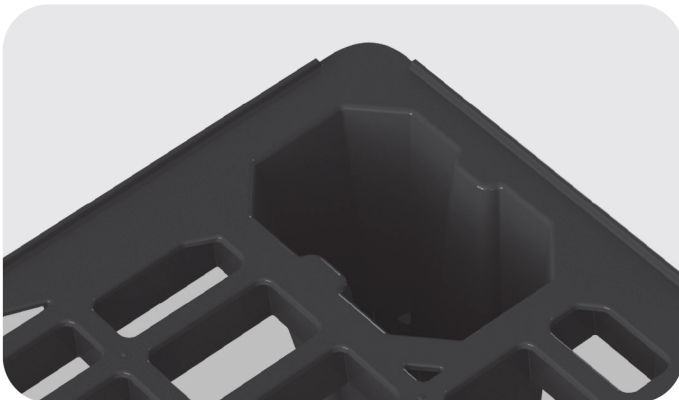


Semi Pallet PG220

PG220



- Ultra light pallet
- Spacious extra-wide forklift entry
- Strong legged structure
- Custom aviation safety requirements
- The ultimate nestable semi light pallet
- UV Resistant



Specifications

DIMENSIONS

Dimensions (L / W / H)	31.5 / 23.6 / 5.1 in	800 / 600 / 130 mm
------------------------	----------------------	--------------------

LOGISTICS

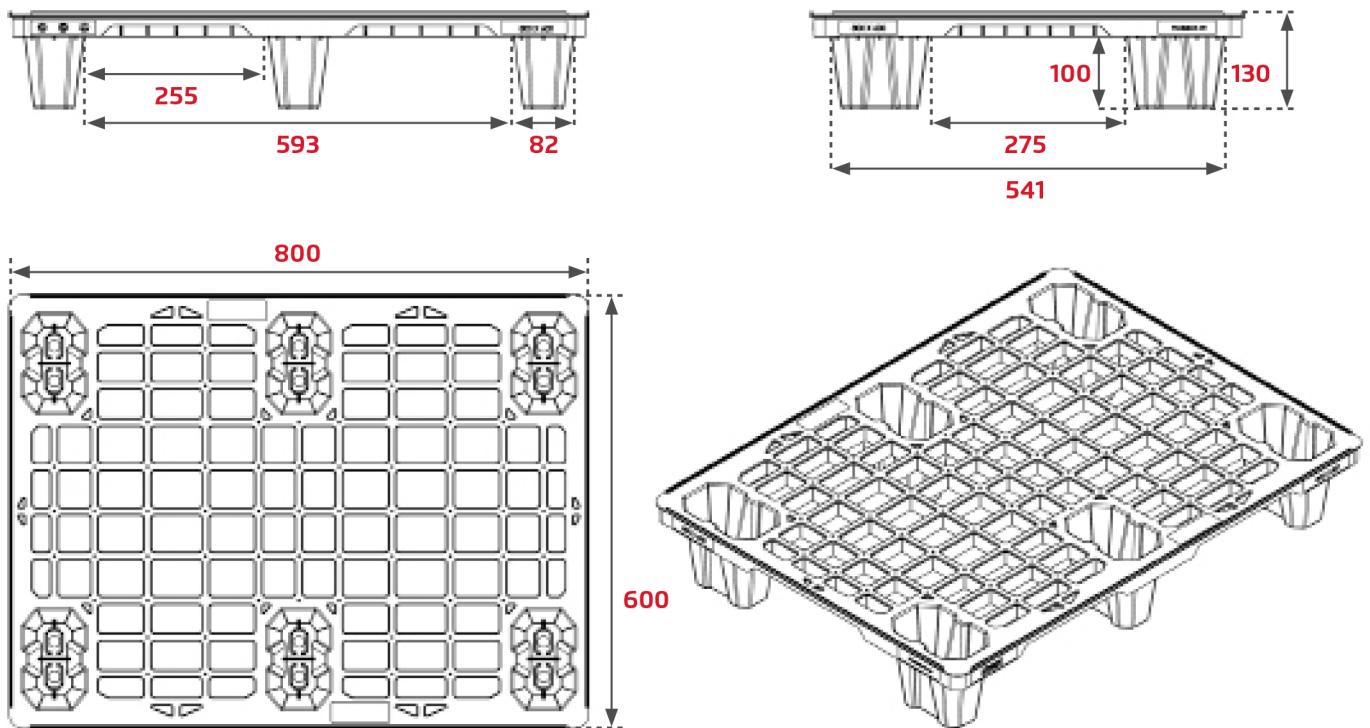
Weight	5.5 LB	2.5 kg
Maximum load Dynamic	1,102 LB	500 kg
Maximum load Static	2,204 LB	1000 kg
Pallets per stack (HC)	164	
Units per 40 HC	4100	
Units per 53' truck	6232	

MATERIAL

Material	PE
Color	Black

* Load capacities are based on evenly distributed loads and can vary according to the type of load.

Technical Drawing (mm)



Plasgad USA LLC.

933 Meacham Rd. Suite C, Statesville NC 28677 | T. +1 980 223 2197 | F. +1 980-270-1217 |

Email. us_customerservice@plasgad.com