

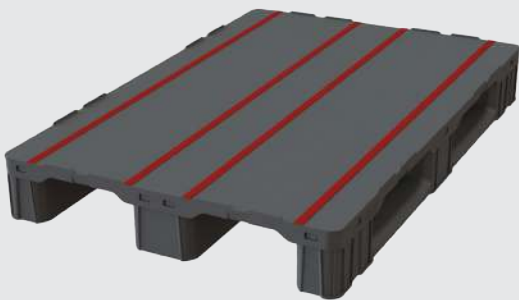
Logistic Pallet PG1080



PG1080



- Racking capabilities
- Low self weight
- Environmentally friendly - 100% recyclable
- Easy washing and cleaning
- Optimized to fit conveyors and automated systems
- Rubber anti-slip gems / strips
- 2 optional safety rims
- Replaceable skids
- Optional GPS/IOT tracking device to provide real time data



Specifications

DIMENSIONS

Dimensions (L/W/H) 1,200 / 800 / 150 mm 47.2 / 31.5 / 5.9 in

LOGISTICS

3 skids

3 skids + 3M

| | | | | |
|----------------------|----------|-----------|----------|-----------|
| Weight | 14.4 kg | 31.7 lb | 18.1 kg | 39.9 lb |
| Weight CD | 15.4 kg | 31.9 lb | 19 kg | 41.8 lb |
| Maximum load Dynamic | 1,500 kg | 3,307 lb | 1,500 kg | 3,307 lb |
| Maximum load Static | 5,000 kg | 11,025 lb | 5,000 kg | 11,025 lb |
| Racking | 700 kg | 1,543 lb | 1,200 kg | 2,645 lb |
| Pallets per stack | 25 | | 25 | |

TRANSPORT

40' HC 525

Mega truck 702

53' truck 810

* Load capacities are based on evenly distributed loads and can vary according to the type of load.

Technical Drawing (mm)

